



The P&H line of laboratory products is intended for use in environments where daily exposure to wet conditions, harsh chemicals or temperature extremes demand greater performance than standard casters materials and finishes may provide.

The exceptionally durable products included in the P&H Lab line include premium features such as stainless steel yokes and bearings, that will enhance performance in harsh conditions and extend caster life.

## WHEEL MATERIALS

### Polyurethane

- High quality 304 stainless steel yoke
- Suitable for a wide variety of applications
- Stainless steel dual precision bearings
- Zerk fitting in raceway
- Side and/or top brakes available
- Grease seal keeps lubricant in place



**T26P154CL7F/WC2054LDA**

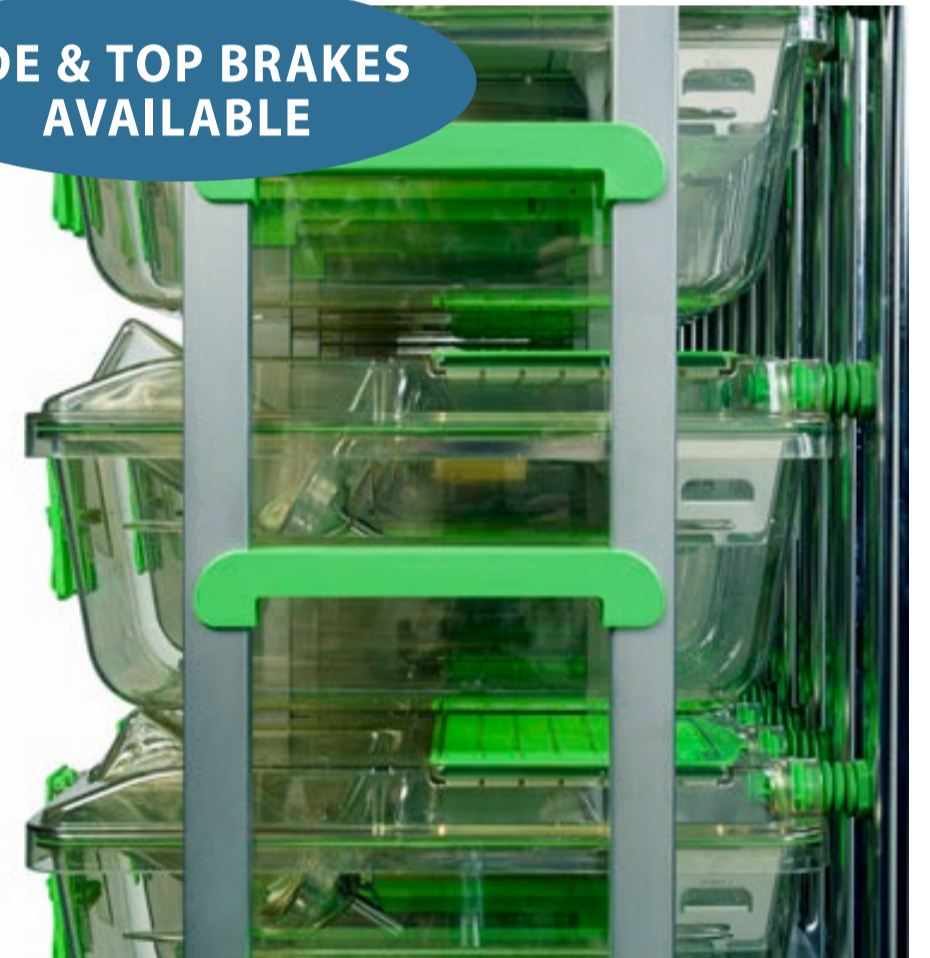
5" x 1.25" stainless steel swivel plate caster with polyurethane wheel includes stainless steel dual precision bearing.



**T20S354CLWF/WC2054LD**

5" x 1.25" stainless steel swivel stem caster with polyurethane wheel includes stainless steel dual precision bearing.

**SIDE & TOP BRAKES AVAILABLE**



### Phenolic/Epoxy Resin

- 304 Premium stainless steel yoke
- Phenolic and Epoxy Resin wheel options
- Stainless steel dual precision bearings
- High temperature usage

#### Phenolic



**T40P352H3\*KFB/WL405232U**

4" x 2" stainless steel swivel plate caster with high temp phenolic wheel includes stainless steel dual precision bearing and side brake.

#### Epoxy Resin



**T40P3521NPMFB/WH4052NU**

4" x 2" stainless steel swivel plate caster with high temp epoxy resin wheel includes stainless steel dual precision bearing and side brake.

**HIGH TEMPERATURE**



### QUALITY

P&H believes that quality is a dynamic principle and not a static achievement. We strive continuously to make our products better.

### SERVICE

Products are only a part of the equation. Superior products backed by exceptional customer support. That's the P&H difference.

### SOLUTIONS

At P&H, we do more than just manufacture products--we create solutions. That's one of the reasons that P&H is the market leader in shopping cart wheels.

When you contact P&H, it's the beginning of the exceptional support our professionally trained team provides. You can expect expert help in identifying the best wheels and casters for your application, and the exceptional customer service that makes P&H the trusted choice of the U.S. retail industry.

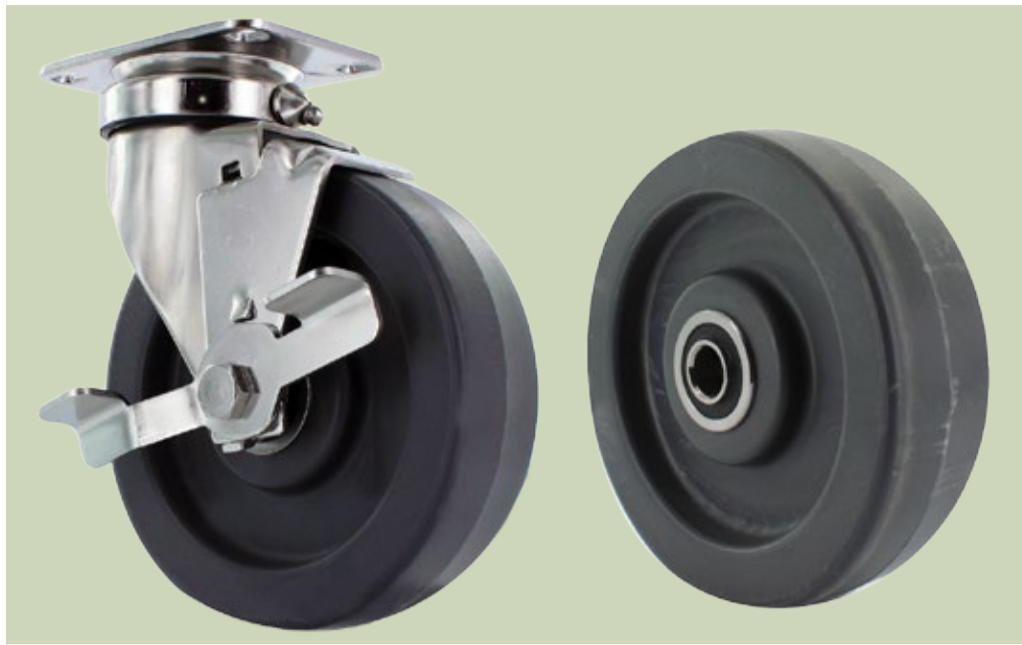


### CONTACT

- 📍 1016 W. Harris Rd. Arlington TX 76001
- 📞 800 354 8622
- ✉️ sales@phcasters.com

### Retort

#### HIGH TEMPERATURE



T26P1530FKJFS/W02053AKU0

- Higher temperature rated polypropylene
- Premium 304 stainless steel yoke
- Stainless steel bearing, grease seal and zerk fitting for easy maintenance
- Perfect for washdown applications
- Durable, smooth riding polypropylene
- No metal degradation and pitting when exposed to harsh chemicals and high temperatures
- Operating Temperature: -20°F to 290°F
- Available in 3.5" and 5" wheel sizes
- Optional side brake
- 2 3/8" x 3 5/8" plate mount



### Solid Urethane



T40P352EUPMS3/WE4052UPA

- Available in 4" x 2" and 5" x 2" wheel sizes
- 4" x 4 1/2" plate mount
- One piece construction resists debonding and tread separation
- High impact and abrasion resistant
- Easy rolling
- Will not damage flooring
- Precision bearing also available in stainless steel



### Solid Urethane on Stainless

#### HIGH TEMPERATURE



T26FA547JKJF/W72654JKU

- 0.875" square stem attachment
- 3" stem length with two friction rings
- Liquid cast Polyurethane is chemically bonded to a stainless steel hub
- Resists tread separation
- Impervious to oil, grease and solvents
- Will not damage flooring
- Non-sparking and non-conductive



## APPLICATIONS

Designed to withstand a host of environmental challenges, the P&H Laboratory/Veterinary line of casters and wheels are versatile enough to work equally well for a wide range of other applications. Ask your P&H sales representative or our outstanding customer service team for more information about this line of premium products.

- |   |  |   |  |
|---|--|---|--|
| <ul style="list-style-type: none"> <li>• Institutional</li> <li>• Light Industrial</li> <li>• Laboratory</li> <li>• Distribution</li> <li>• Moving</li> </ul> | <ul style="list-style-type: none"> <li>• Backroom</li> <li>• Food Service</li> <li>• Hospitality</li> <li>• Janitorial</li> <li>• Medical</li> </ul> | <ul style="list-style-type: none"> <li>• Autoclaves</li> <li>• Food Processing</li> <li>• Washdown</li> <li>• Veterinary</li> <li>• Automotive</li> </ul> | <ul style="list-style-type: none"> <li>• Biomedical</li> <li>• Towline</li> <li>• High Moisture Environments</li> <li>• Retort Carts</li> <li>• Commercial Oven Racks</li> </ul> |
|---|--|---|--|

#### QUALITY

P&H believes that quality is a dynamic principle and not a static achievement. We strive continuously to make our products better.

#### SERVICE

Products are only a part of the equation. Superior products backed by exceptional customer support. That's the P&H difference.

#### SOLUTIONS

At P&H, we do more than just manufacture products--we create solutions. That's one of the reasons that P&H is the market leader in shopping cart wheels.

When you contact P&H, it's the beginning of the exceptional support our professionally trained team provides. You can expect expert help in identifying the best wheels and casters for your application, and the exceptional customer service that makes P&H the trusted choice of the U.S. retail industry.



#### CONTACT

- 📍 1016 W. Harris Rd. Arlington TX 76001
- 📞 800 354 8622
- ✉ sales@phcasters.com