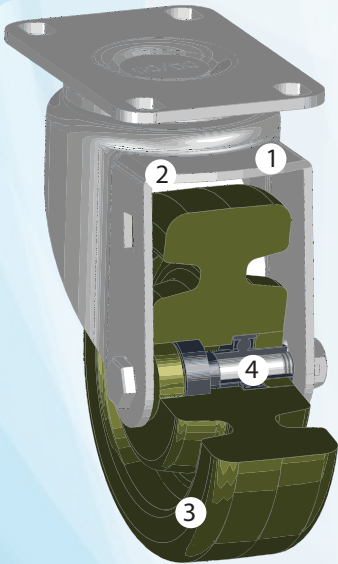


the **Poly-UHT** High-Temp

1 Series

HEATMASTER

High Temperature Epoxy Resin Wheel



- 1 - Double ball raceway with high temperature grease in raceway
- 2 - Stainless steel or zinc plated yoke
- 3 - High temperature epoxy resin
- 4 - Patented, sealed precision bearing with anti-rust coating and high temperature grease

The PolyU® Ultra High Temperature **HOTWHEEL** is designed to withstand a continuous temperature of 500° F. Made of shock and impact resistant epoxy resin, these wheels are unaffected by most chemicals, water and steam; making them the perfect choice for bakery, food service operations, and food processing plants, as well as autoclaves and laboratories.

These medium duty wheels provide excellent non-marking floor protection and feature a precision bearing and a range of wheel sizes and caster options.

FEATURES

Wheel

- Patented, dual large precision bearing
- High temperature impact resistant epoxy resin
- Excellent for wet locations

Yoke

- Non-rusting, heat resistant (stainless model)
- High temperature grease in swivel raceways
- Long lasting, NSF approved
- Ideal for washdown applications
- Available in zinc and stainless steel

Bearing

- Available in 3/8" zinc or stainless steel
- Extended bearing life
- Maintenance free
- US Patent 7.011.317



OPTIONS

Diameter	Tread Width	Bearing Types	Bearing Sizes
4"	1.5"	Dual Precision	5/16" - 3/8" - 1/2"
4"	1.5"	Plain Bore	5/16"
4"	2"	Dual Precision	1/2"
5"	2"	Dual Precision	1/2"
6"	2"	Dual Precision	1/2"

WHEEL

Diameter	4"
Tread Width	1 1/2"
Hub Width	1 3/4"
Bearing	5/16" QuadX Precision
Load Capacity	500 lbs.
Weight	1 lb.
Hardness (durometer)	A70
Bore	3/8"
Temperature Range	500° F Continuous 550° F Intermittent



APPLICATIONS

- Autoclaves
- Smokehouses
- Laboratories
- Aerospace
- Bakeries
- Food service
- Food processing
- High temperature environments



CASTER

Both swivel and rigid caster models are available to fit all of the sizes of the epoxy resin high temperature wheel.

Choose from zinc plated, lacquer dipped steel or stainless steel with several different mounting options.